



ORDERING INFORMATION

MODEL	DESCRIPTION
APK2	AUTOPHOS KIT BACnet,N2, 32 TWO-WIRE RELAYS
APK3	AUTOPHOS KIT BACnet,N2, 32 THREE-WIRE RELAYS
APK4	AUTOPHOS KIT BACnet,N2, 30 FOUR-WIRE RELAYS
APK5	AUTOPHOS KIT BACnet,N2, 32 FIVE-WIRE RELAYS

ACCESSORIES

APK2X	Expansion kit to 60 relay outputs for APK2
APK3X	Expansion kit to 60 relay outputs for APK3
APK4X	Expansion kit to 60 relay outputs for APK4
APK5X	Expansion kit to 60 relay outputs for APK5
APKPT3	12" 3-wire pigtail and IDC wire connectors for use with APK3
APKPT4	12" 4-wire pigtail and IDC wire connectors for use with APK4
APKPT5	12" 5-wire pigtail and IDC wire connectors for use with APK5
APUSB-TK	Configuration software for Autophos® series and Tech Cable

RELATED PRODUCTS

	RELATED PRODUCTS	PAGE
RR-7	Three-wire low voltage leads	589
RR-9	Five-wire low voltage leads with isolated pilot auxiliary contact	589

DESCRIPTION

The **APUSB-TK** (formerly Apsoft or LP-PK) is configuration software required for AUTOPHOS® lighting and retrofit panels. The software is used to assign Inputs to Outputs utilizing a grouping method. Inputs consists of switches, occupancy sensors, light level sensors, etc, and are configured with various settings. Outputs consists of relay loads. Together the Inputs and Outputs are configured and assigned control of a group. Groups are then identified by the BMS and treated as control points.

REQUIREMENTS

- **IBM compatible Pentium or newer**
- **2 MB or more of RAM**
- **Mouse and unused serial/USB port**
- **1M free hard drive space**
- **CD drive**
- **Windows NT, 2000, or higher**

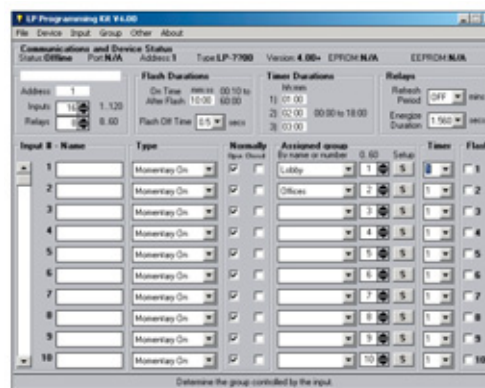
FEATURES

- **Easy-to-use, Windows-based programmers tool**
- **CD and USB cable provided**
- **Direct connect PC to lighting panel**
- **Used to assign panel address and configure inputs/outputs**
- **Reads, writes, and stores lighting controller program**

AUTOPHOS® SET-UP SOFTWARE

APUSB-TK

AUTOPHOS®



AUTOPHOS® configuration kit includes:

- **USB cable for computer connection**
- **CD configuration software**

ORDERING INFORMATION

MODEL	DESCRIPTION
APUSB-TK	Configuration software for Autophos® series and Tech Cable